

Spotlight on the Welsh Baccalaureate

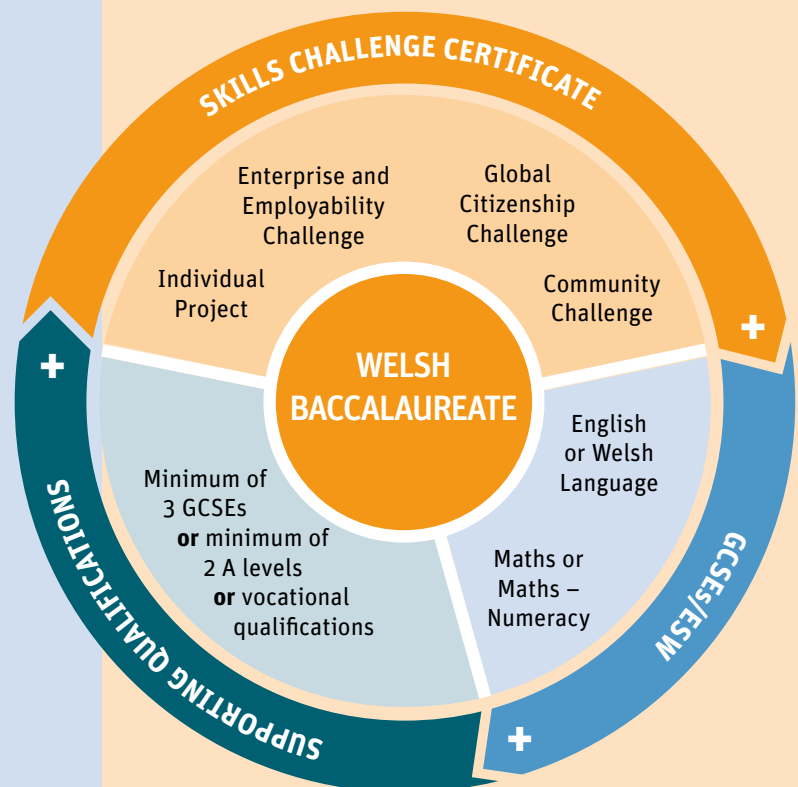
This summer sees the second award of the Key Stage 4 and Advanced Welsh Baccalaureate. The Post-16 Welsh Baccalaureate at Foundation and National levels will be awarded for the third time.

What is the Welsh Baccalaureate?

The Welsh Baccalaureate (Welsh Bacc), at each level, is made up of a Skills Challenge Certificate and some supporting qualifications.

The Skills Challenge Certificate, a new and innovative skills-based qualification, assesses skills for further study and employment and comprises four components.

These four components are common to all levels and enable learners to develop the skills needed for education, employment and life:



Skills Challenge Certificate	Purpose	Skills developed and assessed
1. Individual project (50%)	To develop research skills	
2. Enterprise and Employability Challenge (20%)	To develop enterprising skills and attributes to enhance employability	Literacy Numeracy Digital literacy
3. Global Citizenship Challenge (15%)	To develop knowledge and understanding of world issues	Critical thinking and problem-solving Planning and organisation
4. Community Challenge (15%)	To identify and participate in community-based opportunities	Creativity and innovation Personal effectiveness

Students' work for each component of the Skills Challenge Certificate is marked by teachers in schools and colleges and after internal standardisation, a sample of work is moderated by WJEC.

To be awarded the Welsh Bacc, students must achieve the Skills Challenge Certificate and supporting qualifications. The Welsh Bacc is available at levels 1, 2 and 3 and is graded as a pass or fail.

The Key Stage 4 Skills Challenge Certificate is equivalent in size and demand to a GCSE. It can be awarded as a qualification even if a student does not achieve the necessary supporting qualifications to be awarded the Welsh Bacc.

The Advanced Skills Challenge Certificate is equivalent in size and demand to an A level. It is graded in the same way and carries the same UCAS tariff points.

Who's taking these qualifications this summer?

The entry data shows that 27,790 students have been entered for the Key Stage 4 Skills Challenge Certificate which is a 15% increase compared to the 2017 entries. There are 13,230 entries for the Advanced Skills Challenge Certificate, which is a 14% increase compared to the 2017 entries.

There has been a decrease in the number of entries for the Post-16 Skills Challenge Certificates compared with 2017. 190 students have been entered for the Post-16 Skills Challenge Certificates; compared to 1,600 entries in 2016.

